



DentalSense
no sense in paying more



DentalSense
no sense in paying more

**Dental Sense is now offering new
turn-key locations anywhere In
The United States In 120 Days !**



“It Doesn't Make \$ense To Pay More”

- Your Own 100% Turn Key Office, With The Latest Equipment,
All for one flat rate in approximately 120 days...

MICROCOPY
INNOVATIONS FOR DENTISTRY

Flow
DENTAL

kuraray



Danville

PULPDENT®



Cranberry
Premiere About Your Health

Bosworth Company



Sultan Healthcare



CROSSTEX®
INTERNATIONAL

sun
MEDICAL IMAGING INC

Metrex
Protecting People
www.metrex.com

Air

Zirc
Because Time Is Everything

SI

A logo for DentalSense, featuring a stylized tooth shape with a green outline and a blue outline.

DentalSense
no sense in paying more

Locations:

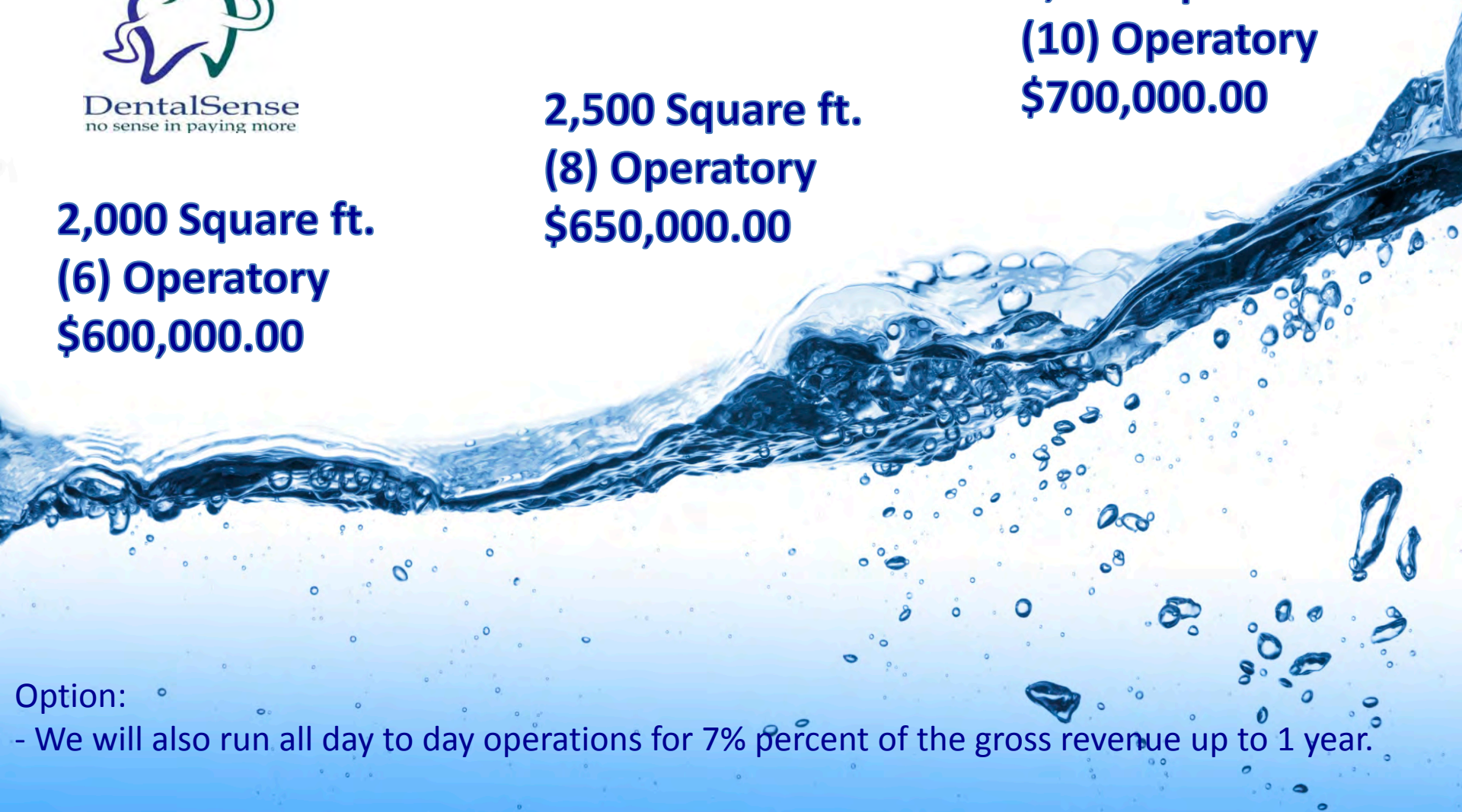
**Completely Set Up Anywhere In The
USA In Approximately 120 Days !**



**2,000 Square ft.
(6) Operatory
\$600,000.00**

**2,500 Square ft.
(8) Operatory
\$650,000.00**

**3,000 Square ft.
(10) Operatory
\$700,000.00**



Option:

- We will also run all day to day operations for 7% percent of the gross revenue up to 1 year.

Smarter Technology

How important is it that DentalSense will have access to dental equipment technology that few, if any, single practitioners have or will have? Very! A solid partnership, with industry equipment leaders. This will ensure you just that access. That state-of-the-art technology will significantly improve the patient experience and substantially increase the efficiency of your dental operation.



Smarter Convenience

How will hard working Americans react to a conveniently located dental center? DentalSense will build your new office around your patients busy schedules and NOT where many dentists are available today. The answer is obvious, with highly visible convenient commercial retail locations and more comfortable, more patient-friendly waiting rooms. Patients will instantly respond to your office which will result in a steady growth of success !



Smart Payment Alternatives

How is DentalSense prepared to handle the cash crisis facing most American Dentist and especially graduating senior dental students? Up to 100% financing for your new modern location. Your office will be operationally efficient and on the threshold of being a major industry player. DentalSense Turn Key LLC will be able to offer in-house financing with company-based payment plans as well as working with some of the major lenders in the country on your behalf.



DentalSense
no sense in paying more

BB&T



Bank of America



**WELLS
FARGO**

Smarter Marketing

Has the DentalSense team done its homework? Without question, and in every possible way. From recognizing that women are responsible for almost 75% of all healthcare decisions today. To familiarizing itself with today's state-of-the-art technology as it relates to every aspect of the dental business. From identifying the best potential markets, to designing a dental office that is efficient, convenient and patient-friendly. DentalSense Turn Key LLC has done everything possible to build the foundation for your unrivaled success.

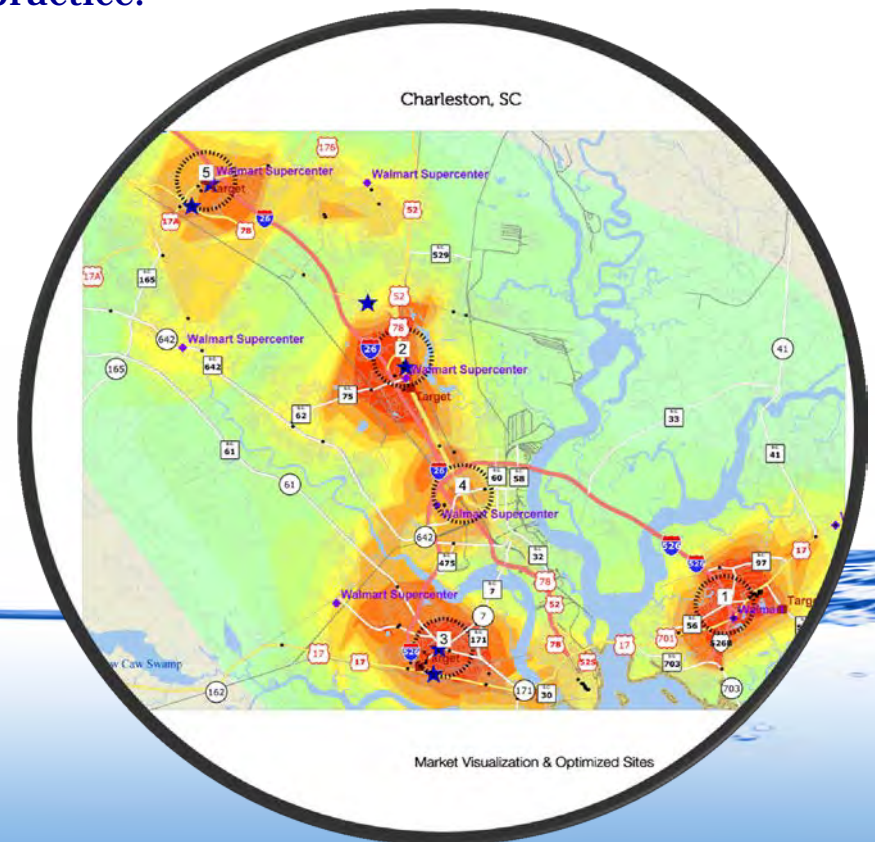


Smarter Market Targeting

How insightful is it that DentalSense Turn Key LLC has targeted the United States for your location launch? Extremely. Each of the initially targeted markets offers exactly what your dental practice is best suited for. Plenty of hard working middle-income Americans, as well as the senior citizen population that is exploding. Charleston, Dallas, Richmond, Orlando, Charlotte, Tampa, Atlanta, Jacksonville, Raleigh just to name a few. The opportunities are exceptional and limitless. The timing is right with your competitors and so will be your new dental practice.



DentalSense
no sense in paying more



Smarter Communication

Is DentalSense prepared to play in this communication-crazy world on your behalf ? Absolutely! From an interactive web presence to appointment reminders via text, from high-tech variable data direct mail campaigns to the effective use of e-mail, from utilizing Facebook to Tweeting about teeth. DentalSense clearly recognizes that, today's, communication in all available forms is key to your success. Our complete program is included in your purchase of your practice! Our goal is for every dentist to be the ultimate patient advocate.



Smarter by the Numbers

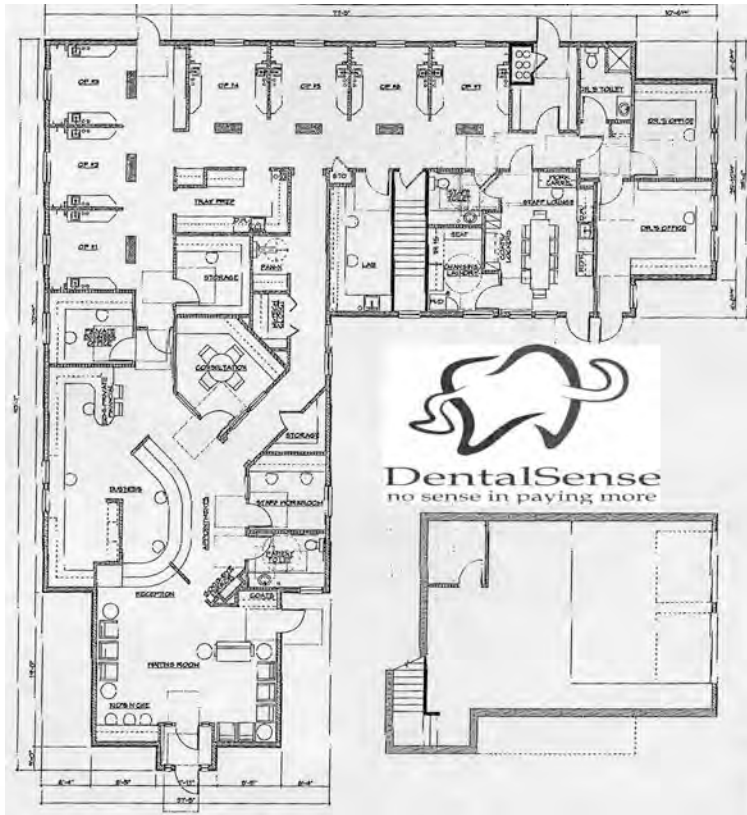
- 75+** Percentage of adults over 35 with some form of periodontal disease, the number one cause of tooth loss and the leading precursor to the need for dentures
- 29,796** The current number of private practice dental offices in NC, SC, FL, TX and VA
- 90** Percent of dental industry is made up of private/single practitioners
- 149** The projected number of DentalSense Turn Key LLC locations in NC, SC, FLA, TX, TENN, WV, VA, NM using the very conservative ratio of one DentalSense Turn Key LLC location per every 200 private practices
- 2011** The year DentalSense will revolutionize dentistry again, particularly in the USA



Typical Floor Plans



DentalSense
no sense in paying more



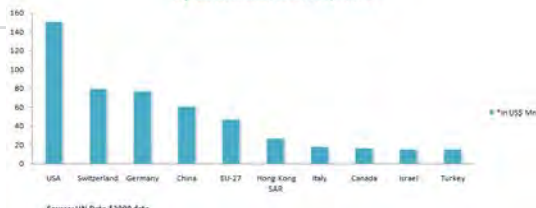
Support Services Available Hit the Ground Running With Are Experience

Example:



Rent	5,484	8,130	5,004	1,435	20,053	
utilities	785	998	888	150	2,821	
telephone	949	949	949	949	3,796	
advertising	4,850	4,850	4,850		14,550	
ins proc	2,000	2,000	2,000		6,000	
salary	29,853	38,181	38,885	41,680	148,599	
payroll taxes, fee	2,615	3,399	3,399	3,660	13,073	
loan pymt	3,800		10,000	6,250	20,050	
supplies	5,000	5,000	5,000	2,500	17,500	
merchant fee	757	1,478	1,553		3,788	
bank service fee	139	192	181	775	1,287	
janitorial	1,000	1,000	1,000		3,000	
insurance	1,500	1,500	1,500		4,500	
Dr. Layton Fee	800	800	800		2,400	
7% Mgmt	7,000	7,000	7,000		21,000	
20% Fluff Factor	13,306	15,095	16,602		45,004	
Monthly	79,838	90,572	99,611	57,399	327,420	327,420
Breakeven per day (based on 25 days per month)	3193.54	3622.90	3984.43	2295.95	13096.81	

Top 10 Artificial Teeth Exporters



DentalSense
no sense in paying more

Complete System



- * Clinical Supplies:
- * Wave One Endo System:
- * Hand Pieces
- * Clinical Instruments
- * Lab Supplies
- * Lab Instruments
- * Lab Equipment
- * Treatment Room
- * Sterilization Room
- * Mechanical Room
- * OSHA
- * Imaging
- * Information Technology
- * Front Desk
- * Clinical Cabinetry
- * Office Collateral

Clinical Supplies

- * EXTENDED DESCRIPTION
- * HYDRO-CAST P/L STANDARD PK
- * 160-PIECE FIRST AID KIT EA
- * ACCLEAN 1.23% APF 60S GEL BUBBLEGUM 16OZ/BT
- * ACCLEAN PLUS FLOSS MINT 100YD EA
- * ACCLEAN PROPHY PASTE COARSE MINT 200/BX
- * ACCLEAN TOOTHBRUSH YOUTH 28 TUFT 72/BX
- * ACCU FILM II RED/RED EA
- * ADHESIVE VPS 60ML/BT
- * ADULT MOUTH PROPS ADULT
- * ALLOOSS CORTICO/CANCELLOUS .5CC EA
- * ALLRAP COVER FILM 4X6 BLUE 1200/RL
- * AMMONIA INHALANTS 10/PK
- * AMOXICILLIN CAPSULES TRIMOX 500MG 50/BOTTLE
- * ANEROID SPHYG POCKET LF BLACK ADULT EA
- * APPLICATOR COTTON TIPPED NON-STERILE 6" 1000/BOX
- * ASPIRATOR TIP SURGICAL GREEN 1/4"D 25/PK
- * ASPIRATOR TIPS SURGICAL 1/8"DIA 25/PKG
- * BENZO-JEL TOPICAL GEL CHERRY 1OZ/JAR
- * BIB-EZE DISPOSABLE BIB HOLDERS 250/PK
- * BITE WING TABS NO PEEL 500/BX
- * BLADE SURGICAL #15 STERILE STAINLESS STEEL 100/BOX
- * BLU-BITE HP FAST SET MINT 2/BX
- * BONDING OVER GLASSES AMB LENS ECONO EA
- * BROWNIE FG MINI POINTS H413 72/BX
- * BUR CARBIDE FG 557 10/PK
- * CALCIUM HYDROXIDE POWDER 1LB/EA
- * CARBIDE BUR RA 2 10/PK
- * CARBIDE BUR RA 4 10/PK
- * CARBIDE BUR RA 6 10/PK
- * CARBIDE BUR RA 8 10/PK
- * CARBIDE BUR RA 245 10/PK
- * CARBIDE BUR SURGICAL FG 557 5/PK
- * CAVICIDE DISINFECTANT 1/GALLON EACH
- * CAVIT G GREY 28GM/JAR
- * CERISAW KIT ANTERIOR EA



Front Office

- * PERFORATED EDGE WRITING PAD, LEGAL RULED, LETTER, WHITE, 50-SHEET, DOZEN
- * DESK HIGHLIGHTER, CHISEL TIP, FLUORESCENT YELLOW, 12 PK
- * ONYX ROUND MESH WASTEBASKET, STEEL MESH, 5 GAL, BLACK
- * DESKSIDE PLASTIC WASTEBASKET, RECTANGULAR, 7 GAL, GRAY
- * DESKSIDE PLASTIC WASTEBASKET, RECTANGULAR, 10 1/4 GAL, GRAY
- * TWO-DRAWER MOBILE FILING CABINET, 14-3/4W X 18-1/4D X 26H, GRAY
- * LEAFLET BROUHOURE HOLDER
- * BLUE CHAIRS
- * CONSULTATION CHAIRS
- * TASK CHAIRS
- * PAPER SCHREDDER
- * TAPE DISPENSOR
- * MANAGERS DESK
- * GLASS FRONT REFIGDERATOR
- * COFFEE TABLES
- * OVEN TOP 2 BURNER



- * LARGE SILVER BOILING POTS
- * VASALINE
- * ALCOHOL
- * PEROXIDE
- * ORGANIZATIONAL BINS
- * VACUM
- * MICROWAVE
- * KURIG & KOURSEL
- * COFFE POT
- * SMALL RUFFIE TRASH BAGS
- * HAND MIRRORS
- * WASH CLOTHS 15PK
- * OVEN MIT
- * TACKLE BOXES FOR BURS
- * PLASTIC BAGS
- * WHIRLPOOL REFIGDERATOR
- * PLASTIC BREAKROOM TABLE
- * WALL RACK FOR LAB COATS
- * TV

Front Office

- * WORKSAVER BIG TAB DIVIDERS, CLEAR TABS, 8-TAB, 9X11, WHITE
- * TOP-LOADED POLY SHEET PROTECTORS, STANDARD, LETTER, CLEAR, 100/BOX
- * PLASTIC ANTIMICROBIAL CLIPBOARD, 1 IN CAPACITY, BLUE
- * ROUND SITC BALLPOINT PEN, BLACK INK, MEDIUM POINT 1.0 MM, 60 PER BOX
- * WITE OUT EZ CORRECT CORRECTION TAPE, 10 PACK
- * PERMANENT MARKERS, CHISEL TIP, BLACK, 12 PACK
- * NESTABLE JUMBO WIRE MESH PENCIL CUP, BLACK
- * MESH BUSINESS CARD HOLDER, CAPACITY 50
- * BUSINESS ENVELOPE, CONTEMPORARY, #10, WHITE, 500/BOX
- * 8.5 X 11 COPY PAPER- WHITE 92 BRIGHT 20LB
- * SMOOTH PAPER CLIPS, WIRE, JUMBO, SILVER, 100/BOX, 10 BOSEX/PK
- * NONSKID PAPER CLIPS, WIRE, NO.1, SILVER 100/BOX, 10 BOSEX/PK
- * AUTOMATIC HAND TOWEL DISPENSER

- * FULL STRIP DESK STAPLER, 20 SHEET CAPACITY, BLACK
- * STANDARD CHISEL POINT STAPLES, 5,000 BX
- * JAW STYLE STAPLE REMOVER
- * VALUE DESKTOP TAPE DISPENSER, BLACK SILVER
- * MAGIC TAPE VALUE PACK, 10 PACK
- * ALL PURPOSE VALUE 8 IN. SCISSORS 3 PACK
- * INDUSTRIAL ALKALINE BATTERIES, AA, 24 PACK
- * MINIDESK CALCULATOR, 8 DIGIT LCD
- * NONSTICK HEAVY-DUTY EZD REFERENCE BINDER, 3 IN. CAPACITY, BLACK
- * THREE-HOLE PUNCH, 20 SHEET CAPACITY, BLACK/SILVER
- * SURGRIP UTILITY KNIFE WITH CONTOURED HANDLE & RETRACTABLE BLADE, BLACK
- * SIDE LOAD LETTER DESK TRAY, TWO TIER, PLASTIC, BLACK
- * HEAVY-DUTY STEEL FIRE-RETARDANT SECURITY CASH BOX, KEY LOCK, SAND
- * ECONOMY BALLPOINT STICK OIL-BASED PEN, RED INK, MEDIUM, DOZEN
- * SHOWCASE REFERENCE VIEW BINDER, 3" CAPACITY, WHITE
- * AUTOMATIC SOAP DISPENSER



DentalSense
no sense in paying more

Clinical Instruments

- * AMALGAM CARRIER DE NYLON MEDIUM-LARGE EA
- * AMALGAM WELL EA
- * ANODIZED COMPOSITE INSTRUMENT DE F4 EA
- * ARTICULATING PAPER FORCEP EA
- * ASPIRATING SYRINGE 1.8CC COOK-WAITE TYPE EA
- * BARD PARKER HANDLE #6 EA
- * BONE FILE DE 12 HOWARD EA
- * BURNISHER 21B ACORN MEDIUM EA
- * BURNISHER DE 21B EA
- * CALCIUM HYDROXIDE PLACEMENT INSTRUMENT EA
- * CEMENT SPATULA 24 FLEXIBLE EA
- * CORD PACKER DE R50 CIRCLET PLAIN EA
- * COTTON PLIER 317 COLLEGE SERATED TIPS EA
- * COTTON PLIER SELF LOCK GROOVED STANDARD EA
- * CROWN REMOVER MORRELL W/3 TIPS A,B,C EA
- * CURETTE BONE DE LUCAS 85 EA
- * CURETTE GRACEY DE 11/12 HOLLOW EA
- * CURETTE GRACEY DE 13/14 HOLLOW EA
- * DISCOID & CLEOID DE 1/2 CARVER EA
- * DISCOID & CLEOID DE 3/6 CARVER EA
- * ELEVATOR APICAL #301 EA
- * ELEVATOR CRYER #34 EA
- * ELEVATOR HEIDBRINK DE 13/14 EA
- * ELEVATOR SELDIN #4L EA



DentalSense
no sense in paying more



Clinical Supplies

- * CLINDAMYCIN HCL CAPSULES 150MG 100/BT
- * COTTON ROLLS #2 NON-STER 1.5" 2000/BX
- * CRITERION NON-WOVEN SPONGE N/S 2"X2" 4PLY 200/PK
- * CSR WRAP 12"X12" 1000/CA
- * CSR WRAP 18"X18" 500/CA
- * CUPS PLASTIC 5OZ BLUE 1000/CS
- * DE HC EARLOOP FACE MASK BLUE 50/BX
- * DENTAL CATALOG 2012 EA
- * DESENSITIZER 10ML EA
- * DEXIS PLATINUM SENSOR SHEATHS 100/BX
- * DISCS SEPARATING 7/8" I-DOUBLE 100/BX
- * DISPOS-A-TRAP #5503 144/BX
- * DISPOS-A-TRAP #5508-S 72/BX
- * DISPOSABLE PROPHY ANGLE SOFT BLUE 100/BX
- * DOUBLE TRAYS YELLOW SMALL 100/BX
- * DRI-ANGLE PLAIN LARGE 320/BX
- * DRI-GARD TOWELS 13"X19" 3 PLY BLUE 500/CS
- * DRY SOCKET PASTE 1OZ/JR EA

- * DYCAL STANDARD PACKAGE DENTIN SHADE EA
- * EEZ-THRU FLOSS THREADERS 5/PKG 100/PKG
- * EMPOWER ENZYMATIC SOLUTION GALLON EA
- * ENDO ICE SPRAY 6OZ/CN EA
- * CLEARFIL MAJESTY ESTHETIC PLT A1
- * CLEARFIL MAJESTY ESTHETIC PLT A2
- * ETCH GEL SYRINGE KIT 40% BULK PK 12/PK
- * ETCH GEL SYRINGE TIP BLUE 22GA 20/PK
- * EVACUATOR TIPS DISPOSABLE SLOTTED 50/BAG
- * FLEXI-FLANGE REFILL #0 YELLOW 10/PKG
- * FLEXI-POST ECONOMY TITANIUM #0 YELLOW 30/PK
- * FRESH FINISH PATIENT WIPES LEMON SCENT 100/BX
- * GAPPED STRIPS DUAL PURPOSE 150/BX
- * GATES GLIDDEN DRILLS RA 32MM #5 6/VL
- * GATES GLIDDEN DRILLS RA 32MM ASSORTED 6/VL
- * GELFOAM DENTAL PAK SIZE 4 3/4X3/4" 6X2/PK
- * GINGIBRAID+ NON-IMPREGNATED 0N #0 FINE EA
- * GINGIBRAID+ NON-IMPREGNATED 1N #1 SMALL EA
- * GINGIBRAID+ NON-IMPREGNATED 2N #2 MEDIUM EA



DentalSense
no sense in paying more



Clinical Supplies

- * HANDI-HOPPER LINERS RED 100/BX
- * HEADREST COVERS 11.5"X10" WHITE 250/BX
- * HEATLESS WHEELS # 5 WHITE 50/BX
- * HEMODENT LIQUID 10CC BT
- * HP MIXING TIPS GREEN LRG 6.5MM 48/BG
- * HP MIXING TIPS YELLOW SML 4.2MM 48/BG
- * IMPRESSION TRAYS #1 LG/U PERFORATED 12/PK
- * IMPRESSION TRAYS #2 L/L PERFORATED 12/PK
- * IMPRESSION TRAYS #3 MED/U PERFORATED 12/PK
- * IMPRESSION TRAYS #4 MED/L PERFORATED 12/PK
- * IMPRESSION TRAYS #5 SM/U PERFORATED 12/PK
- * IMPRESSION TRAYS #6 SM/L PERFORATED 12/PK
- * MAXI TEMP KIT A1
- * INTERDENTAL WEDGES THIN/MINI GREEN 400/BG
- * INTRAORAL TIPS YELLOW 100/PK

- * IRM COMPLETE PACKAGE IVORY EA
- * KNIFE EDGE WHEEL BLUE 4960 100/BX
- * LAVENDER PF NITRILE GLOVE LARGE 250/BX
- * LAVENDER PF NITRILE GLOVE MEDIUM 250/BX
- * LAVENDER PF NITRILE GLOVE SMALL 250/BX
- * LIDOCAINE HCL 2% & EPINEPHRINE 1:100000 50/BX
- * LIGHTNING STRIPS MEDIUM ASSORTED 12/BX
- * LUER-LOCK SYRINGES 3CC NON-STER 100/BX
- * MANDREL HP A STYLE #303 PLAIN 12/BX
- * MAXICIDE PLUS W/ACTIVATOR 3.4% GALLON
- * MAXIMA DIAMONDS FG 850-018C 5/PK
- * MAXIMA DIAMONDS FG 856-016C 5/PK
- * MAXIMA NON-WOVEN SPONGES 4X4 4PLY 200/PK
- * MEPIVACAINE HCL 3% PLAIN 50/BX
- * MESH BUR AND DIAMOND HOLDER 3" DIAMETER EA



DentalSense
no sense in paying more



Lab Supplies

- * ACRAWELD ORTHO ACRYLIC CLEAR 1LB/BT
- * ACRAWELD POWDER CLEAR 1LB PKG
- * ACRYLIC HP POLISHERS 0662 MEDIUM 6/PK
- * ACRYLIC HP POLISHERS 0672 COARSE 6/PK
- * ACRYLIC HP TRIMMERS 5105 WHITE 5/BX
- * ACRYLIC LIQUID SELF CURE 1QT/BT 32OZ/BT
- * ARBORBAND CHUCK MANDREL 3/4" EA
- * ARCH WIRE RETAINER 14" LONG .036 10/PK
- * BALL CLASPS .028" 0.7MM 100/PK
- * BASEPLATE WAX ALL SEASON #2 PINK 5LB
- * BENDA BRUSH REGULAR 144/BX
- * BITE RIMS PINK 100/BX
- * BRUSH ROBINSON HP #11 X-STIF 12/PKG
- * BUFF MUSLIN 4X42PLY 12/PK
- * BUR CLEANING BRUSH STEEL EA
- * DENATURED ALCOHOL GAL/BT

- * DENSTONE GOLDEN 50LB/BX
- * DENTURE BOXES BLUE 12/PK
- * DIE KEEN GREEN 120GM 24/BX
- * ECONO CUTTER MANDREL EA
- * ECONO CUTTERS 2 1/2" 7002 EA
- * FELT CONE POINTED LARGE 1"X2" EA
- * FELT CONE POINTED MEDIUM 3/4X1 1/2" EA
- * FELT CONE POINTED SMALL 1"X.5" EA
- * FLINTS PKG/5
- * GEO SNOW
- * GOLDIES CARBIDE BUR HP LATHE A 3/8 EA
- * GOLDIES CARBIDE BUR HP LATHE D 1/2 EA
- * GOLDIES CARBIDE BUR HP LATHE D-3/8 EA
- * IPS OBJECT FIX FLOW SYRINGE 10ML/EA
- * LAB CARBIDE BUR HP 31P EA
- * LAB CARBIDE BUR LATHE REG. CUT C 3/8 EA



DentalSense
no sense in paying more



Construction

General Condition

- * Supervision- appx 120 days
- * Clean up days
- * Final clean up
- * Dumpster rental-3
- * Temp. Toilets
- * Temp. Power
- * Temp. Phone-cell
- * Truck
- * Fuel & Oil
- * Temp. Protection
- * Punch Work
- * Safety
- * Architect/Engineer/close out
- * Liability insurance
- * Measure space/fuel/per diem



DentalSense
no sense in paying more



Construction



DentalSense
no sense in paying more

- * General Condition
- * Site Work
- * Concrete
- * Wood & Plastic
- * Thermal Moisture Pro
- * Doors & Windows
- * Finishes
- * Specialties
- * Mechanical
- * Electrical



Important Disclaimer

This Presentation has been prepared by DentalSense Turn Key LLC “DSTK” (collectively, with any officer, director, employee, advisor or agent of any of them, the Preparers) for the purpose of setting out certain confidential information in respect of DSTK business activities and strategy. References to the “Presentation” includes any information which has been or may be supplied in writing or orally in connection with the Presentation or in connection with any further inquiries in respect of the Presentation. This Presentation is for the exclusive use of the recipients to whom it is addressed. This Presentation and the information contained herein is confidential. In addition to the terms of any confidentiality undertaking that a recipient may have entered into with DSTK Dental, by its acceptance of the Presentation, each recipient agrees that it will not, and it will procure that each of its agents, representatives, advisors, directors or employees (collectively, Representatives), will not, and will not permit any third party to, copy, reproduce or distribute to others this Presentation, in whole or in part, at any time without the prior written consent of DSTK, and that it will keep confidential all information contained herein not already in the public domain and will use this Presentation for the sole purpose of setting out certain limited background information concerning DSTK and its business strategy and activities. This Presentation is not intended to serve as basis for any investment decision. If a recipient has signed a confidentiality undertaking with DSTK, this Presentation also constitutes Confidential Information for the purposes of such undertaking. While the information contained in this Presentation is believed to be accurate, the Preparers have not conducted any investigation with respect to such information. Except to the extent otherwise indicated, this Presentation presents information as of the date hereof. The delivery of this Presentation shall not, under any circumstances, create any implication that there will be no change in the affairs of DSTK after the date hereof. In furnishing this Presentation, the Preparers reserve the right to amend or replace this Presentation at any time and undertake no obligation to update any of the information contained in the Presentation or to correct any inaccuracies that may become apparent. This Presentation shall remain the property of DSTK Dental. DSTK may, at any time, request any recipient, or its Representatives, shall promptly deliver to DSTK or, if directed in writing by DSTK, destroy all confidential information relating to this Presentation received in written, electronic or other tangible form whatsoever, including without limitation all copies, reproductions, computer diskettes or written materials which contain such confidential information. At such time, all other notes, analyses or compilations constituting or containing confidential information in the recipient's, or their Representatives', possession shall be destroyed. Such destruction shall be certified to DSTK by the recipient in writing. This Presentation is not, and under no circumstances is to be construed as, a prospectus, a public offering or an offering memorandum as defined under applicable securities laws and shall not form the basis of any contract.



DentalSense
no sense in paying more